



THE GATE CLOSER SPECIALISTS

EASY PRO Pedestrian Gate Closer

The Easy Pro pedestrian gate closer is an all-in-one closer and hinge system which is designed for installation in high use gates.

With the closer unit concealed inside a strong steel housing, the Easy Pro is tamper and vandal resistant.

Installation of the Easy Pro is normally done when the gate is being fabricated, but can be done afterwards, if required. The closer housing (A) & bottom support (B) are welded into the bottom of the gate and post. When the closer housing (A), bottom support (B) and top pivot hinge plate (C) are welded to the gate and post, they can be galvanized/painted along with the gate and posts.

Whether the closer is for use with a lock, latch or electromagnet, the two hydraulically controlled speed adjustments will give the correct closing speed. There is one control to adjust the closing speed, the other adjusts the latching speed. Both controls are hidden underneath the gate closer housing and can be easily adjusted with an Allen key.

The gate closer housing includes a mechanical stop which restricts the opening of the gate to avoid damaging the closer. The closer can be set for right or left hand without any additional parts or fabrication work.

Limited maintenance is required, only regular gate inspection and periodic lubrication.



Technical Overview:

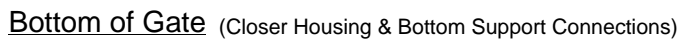
Material	Steel
Colour	Silver - Zinc Plated
Opening Angle	Up to 90 degrees
Hinge arrangement	In-line
Gate Width	1.0 to 1.2m
Gate Weight	Up to 110kg
Gate Height	Up to 2.0m
Gate Material	Metal
Closing Speed	Adjustable
Latching Speed	Adjustable
Gate Stop	Integrated
Temperature	Down to -40 degrees
Hold Open	NO Hold Open

Ordering Details

Product Code.
GATECLOSER075/GCG

Description:
Easy Pro Concealed Gate Closer Kit

Pedestrian Concealed Gate Closer Kit

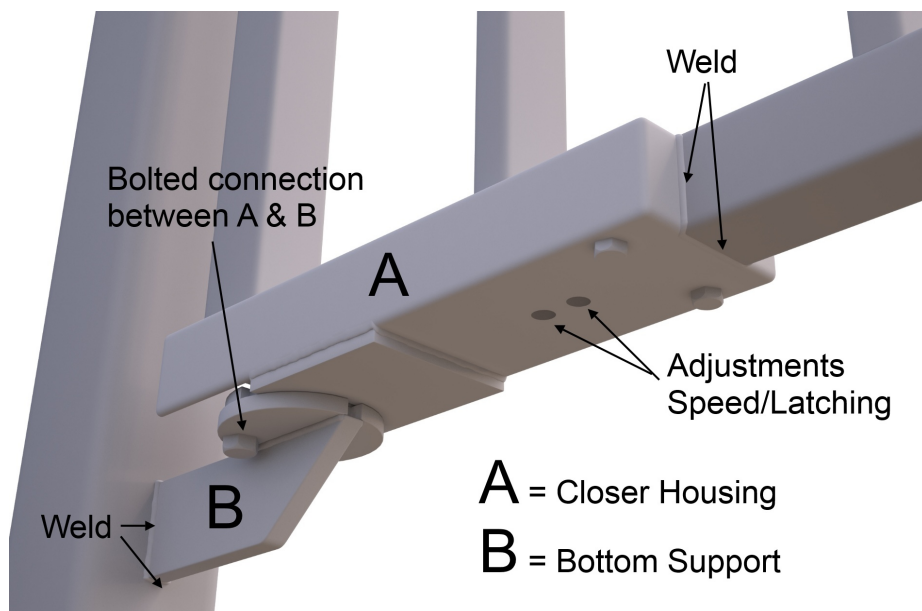


Easy Pro

Pedestrian Concealed Gate Closer Kit



Bottom of Gate (Details)



Ordering Details

Product Code.

GATECLOSER075/GCG

Description:

Easy Pro Concealed Gate Closer Kit